

StudioCCP

CORPORATE PROFILE + CAPABILITY STATEMENT



StudioCCP

No. 7 Waterview Wharf Workshop
37 Nicholson Street,
East Balmain NSW 2041

T: 02 9555 4355

Contact: Simon Child

E: simon@ccpcorp.com.au



www.ccpcorp.com.au

Contents

StudioCCP Company Profile

- General Background 3
- Structure 4
- Service, Technical Capacity
+ Quality Assurance 5

StudioCCP Project Experience 6

- Commercial Workplace 7
- Commercial Buildings 8
- Commercial Showrooms 9
- Sport + Health 10
- Museums + Galleries 11
- Education 12
- Hospitality 13
- Residential 14
- Graphics + Signage 15

StudioCCP Team + CVs 16

StudioCCP References + Testimonials 25

StudioCCP Office Details 28

StudioCCP Current Projects 29



StudioCCP Company Profile

General Background

StudioCCP are an established design practice with a wide range of experience in a variety of disciplines. Founded in 1995, StudioCCP has grown from strength to strength, with the support of stable, loyal and prestigious clients.

For the past 22 years, StudioCCP offices at Mort Bay in Balmain have serviced clients nationally and throughout Asia on global projects.

StudioCCP have a wide range client base and are accustomed to working with different client bodies including Government, Corporate and Non-Government Organisations. Key to our success is 100% repeat business from reputable clients, giving independent assurance of StudioCCP quality business.

StudioCCP understand that the success of a project is not simply in the creation of a unique design concept, but also:

- Efficiency in delivery;
- Cost effectiveness;
- Communication with a diverse client body from business analysts, to technical personnel;
- Durability and quality of service.

One of the most powerful attributes of StudioCCP is its diverse and integrated team of professionals which cross all disciplines in design, graphics, project management, branding and communications.

This integration allows the client not only one approach to a design solution but a streamlined, broader service offering:

- Established experience in communicating with the end users, and flexibility in addressing project requirements;
- An understanding of the requirements of Research and Development, Business Units and an ability to communicate effectively within such teams verbally and graphically;
- Expertise in the documentation of large scale projects with a detailed understanding and ability to effectively support projects.

Structure



Simon Child
Principal/ Director



Santo Talarico
Director



George Wong
Associate
Architect



Derek Raithby
Architect



Sinead Byrne
Senior Interior
Designer



Mira Wangsa
Senior Interior
Designer



Michael C Bryson
Architect



Marta Mibelli
Architect



Talitha Mathias
Interior
Designer

StudioCCP's strength lies in the quality and diverse experience of its personnel, commitment to collaboration as a creative problem solving discipline and dedication to the provision of the highest possible standard of service to clients.

This is reflected in StudioCCP's approach which involves a multidisciplinary team of professionals who have the necessary range of skills to undertake complex major projects.

VALUES

Design Excellence - We believe in the extraordinary power of design to influence the quality of life.

Integrity - We stake our reputation and found our relationships on honesty, trust, respect and financial integrity. We desire clients who believe in the same.

Innovation - We question accepted methods in order to access improved processes and technologies.

Collaboration - We iterate in a co-creative process with clients, consultants and contractors.

Sustainability - We lead by example, providing clients with projects that are environmentally sustainable and responsible.

We have knowledge and experience in LEED certified projects and subscribe to the 2030 Challenge.

Outreach - We evangelize the power of design through teaching, mentorship, community involvement and public speaking.

Service, Technical Capacity + Quality Assurance

StudioCCP offers:

- A pro-active, enthusiastic, precise and experienced team in building design and interior design projects;
- Technical and technological capability with effective management and co-ordination;
- A commitment and ability for collaborative design and team approach to projects;
- Continuity and availability of the project team throughout the life of the project;
- A sound understanding and depth of experience from key personnel in projects demanding significant co-ordination and client liaison issues;
- Innovative conceptual design solutions and ideas clearly communicated through well presented documents;
- Networked CADD backup in the studioCCP office. All data kept secure and backed up daily;
- 3 dimensional perspective and interior views are CADD generated as required;
- Sound experience with all Project Delivery Methods and construction/trade packages;
- Extensive and current experience in custom designed joinery, workstations, technology and the demands of lead times;
- StudioCCP offer a core staff of designers, with a number of specialist collaborators and consultants who become involved on a project by project basis. This particular company framework enables a streamlined, efficient and specialist approach to each project.

StudioCCP are considerate to the environment. We specify E.S.D products which have certification from FSC (Forest Stewardship Council) Environmental Choice, GECA, and products with an environmentally sound cradle to cradle approach to their life cycle.

StudioCCP Design to comply with the Green Building Council of Australia's Green Star accreditation and the Australian Building Greenhouse Rating System.

StudioCCP are compliant with the Fair Work Act 2009 and design client environments to comply with the Fair Work Act Standards.

StudioCCP have a fully networked computer and CADD system, working with the following software:

- Novell Network
- AutoCADD Architecture 2017
- Autodesk Revit 2015
- Google Sketchup
- 3D rendering packages
- Adobe Acrobat, Photoshop, Illustrator, Indesign
- Microsoft Word, Excel, PowerPoint
- Colour printers and Plotters

All data provided on disc will be virus free.

Day to day and quality management of projects are the responsibility of the Principals. StudioCCP projects are subject to in-house audits by team members and the quality manager for StudioCCP in Sydney.

A documented record of process will form part of our QA program. A project quality plan will be drawn up on commissioning and a copy of the plan will be issued to the project clients.

StudioCCP Project Experience

Commercial Workplace

- Boral Head office, North Ryde
- APRA office relocation, Adelaide and Canberra
- Centennial Plaza Lobby and EOT Facilities, Surry Hills
- AWE Limited, Perth WA
- Snowy 2.0 Project Office, Cooma NSW
- Sektor Distributors, Rosehill
- DMG New Head Office, Sydney
- NEV Office Fitout
- Australian Bureau of Statistics, NSW Regional Head Office
- AWE Limited Head Office, North Sydney
- NRMA Motoring Services Head Office, Sydney + Strathfield
- Sydney City Council, Town Hall House, Sydney
- Sydney Harbour Foreshore Authority, Playfair Terraces
- Royal Flying Doctor Service, Sydney and Broken Hill
- Horticulture Australia Ltd, Head Office Fitout, Sydney
- TRICOM Sydney Office
- Sydney IVF Head Office Fitout
- George Weston Foods Head Office Fitout
- MCI Worldcom Technology Centre, Pyrmont
- ING Bank, Clarence Street, Sydney
- Sydney IVF, Sydney

Technology Design

- NRMA Call Centre/Disaster Recovery in Gosford
- TYCO Call Centre
- Subaru Call Centre, Sydney
- Verizon Technology Centre, Sydney

Commercial Buildings

- NRMA Head Office Building Sydney Winner MBA for new building and fitout
- Fremantle Media Building upgrade and new rooftop hospitality
- Metro Signs new offices and factory, Melbourne
- Edwin Davey Mill adaptive reuse, and restoration of a heritage building, into a commercial premises
- NSW Sports Club
- Pacific Waves, Manly
- Refurbishment of Royal Exchange building, 115 Pitt Street and 60 Carrington Street
- Microage Centre

Commercial Automobile Showrooms

- Subaru All 4 The Driver Brand Identity Rollout Nationwide
- Thrifty National Retail Program
- Tynan Subaru, Honda and Mercedes showrooms
- STI Victorian, main showroom and associated rally workshops
- Subaru Interactive at Docklands

Sport + Health

- CRUNCH Fitness, NSW + VIC
- Hard Candy Gym, Druitt Street
- Premier Health and Fitness, 170 Castlereagh Street

- UFC, Alexandria
- Manly Leagues Club
- Little Rascals Play Centre

Museums, Galleries + Retail Showrooms

- Australian Technology Park, Internal + External Wayfinding Signage
- Railcorp Thirlmere, Rail Heritage Centre in asso. with HPA
- Bridgeclimb, The Rocks
- Kinnarps, Furniture Showroom, Sydney
- WW1 Australian War Memorial in France, in asso. with HPA
- New Zealand Maritime Museum, In asso. with HPA
- Waltzing Matilda Centre, Winton, Queensland
- New Seal + Penguin Enclosure for Taronga Zoo, in asso. with HPA
- PNG War Memorials at Isurava, Poppendata and Milne Bay, in asso. with HPA
- MNA Museum of Melbourne + Canberra, Gold Exhibition, in asso. with HPA
- Camatic Furniture, buildings and showrooms in Sydney and Melbourne

Education

- Oakhill College Performing Arts Centre - DA submission
- Oakhill College Library
- Oakhill College Administration Building
- Darlinghurst Public School - refurbishment
- Annandale North Public School - refurbishment
- Rozelle Public School - refurbishment

Hospitality

- Naked Brew, Erskineville
- Corporate Box fitouts at ANZ Stadium, for Coca Cola
- NSW Sports club, Hunter Street, Sydney
- (Olympics & RWC 2003) Hanimex, ANZ, BORAL, SUBARU and Komatsu
- Oak Flats Bowling & Recreation Club
- Harbour Rocks Hotel
- Subaru Café at Docklands, Melbourne

Residential Projects

- Waterview Wharf Workshop, Townhouses Balmain - Current
- Jane Street Residence, Balmain
- Kew Residence
- Mort Street, Balmain Residence
- Colo Residence
- Dural Residence

Graphics + Signage projects

- Australian Technology Park, External + Internal Wayfinding signage
- Australian Bureau of Statistics Environmental Branding
- Oakhill College Library Wall Graphics
- NRMA Motoring Services, Strathfield Environmental Branding
- Horticulture Australia Ltd, Sydney Environmental Branding

Commercial Workplace



AWE Limited Head office, North Sydney



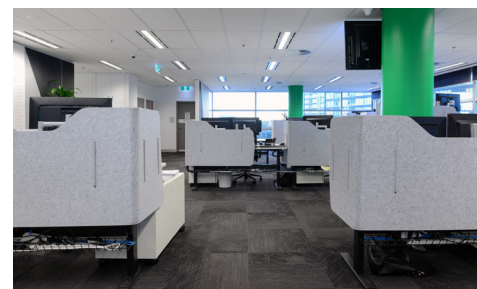
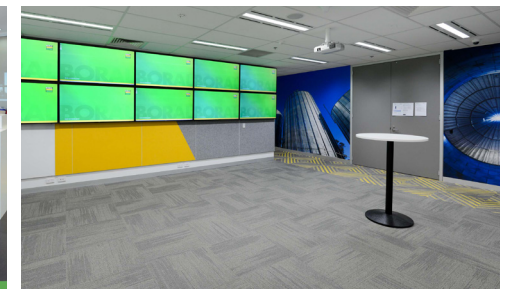
BORAL Head office, North Ryde



Australian Bureau of Statistics, Sydney



NRMA, Wynyard & Strathfield Call Centre



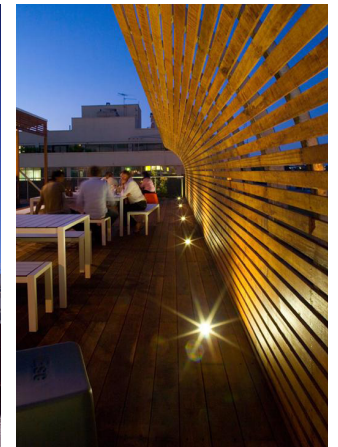
Commercial Architecture



NRMA, Wynyard



Fremantle Media, St. Leonards



Commercial Showrooms



Subaru, Docklands



Mercedes Benz



Honda

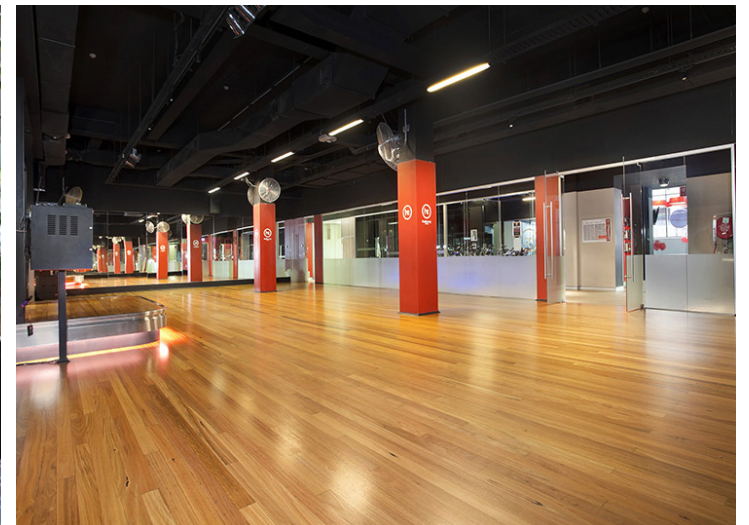
Sport + Health



CRUNCH Fitness, Liverpool



Hard Candy, Sydney CBD



Museums + Galleries



Bridge Climb, Sydney



Railcorp Thirlmere, Rail Heritage Centre

Education



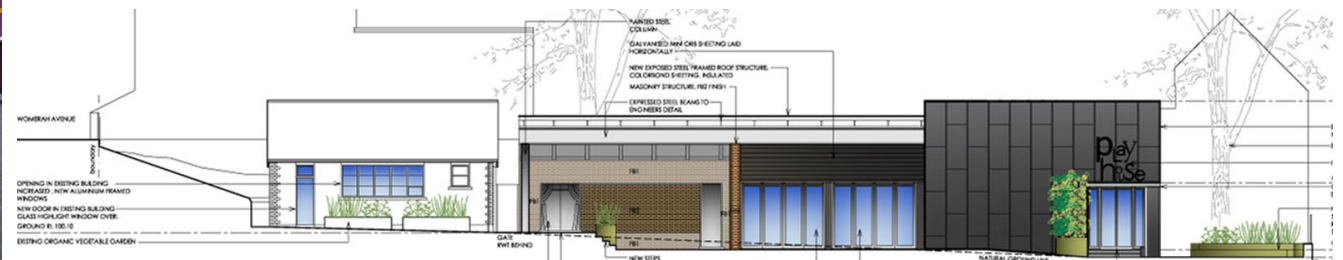
Oakhill College, Library



Oakhill College - Performing Arts Centre DA Submission



Oakhill College, Administration Building



Darlinghurst Public School

Hospitality



Naked Brew Cafe, Erskineville



Naked Brew Cafe, Erskineville



NSW Sports Club



ANZ Stadium Coca-Cola Corporate Box

Residential



Dural Residence



Kew Apartments



Palm Beach Ensuite



Balmain Residence



Balmain East Townhouses

Graphics + Signage



BORAL, North Ryde



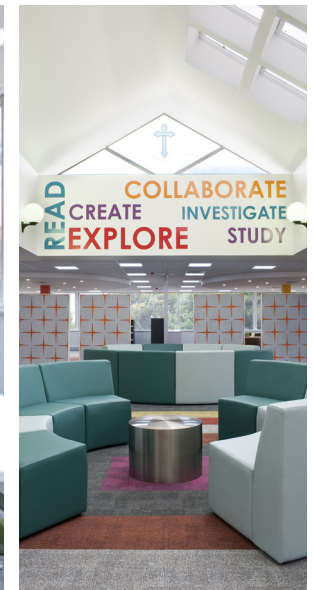
Australian Bureau of Statistics, Sydney



Australian Technology Park, Eveleigh



Oakhill College Library, Castle Hill



StudioCCP Team + CVs



Simon Child
Principal

Simon graduated with a Bachelor of Arts from North London University, UK in 1983. After working with Sir Terence Conran on Retail projects for 5 years, He relocated to Australia as an Associate with Peddle Thorp David Hicks in 1989.

Simon is one of the founding partners of StudioCCP, prior to which he was a Design Director at HASSELL Pty Ltd. for 6 years. Simon has worked on design projects with business leaders at the highest level Internationally, having worked in the UK, Europe, Asia and Australia.

Simon is committed to effective communication with all stakeholders from conceptual design through to building occupation, with the aim to exceed clients design expectations. His success in the design and management of the process has lead to the return of many prestigious clients including NRMA Motoring Services, InchCape Motors, Colliers International, Verizon and Subaru Australia.

Simon's passion is the pursuit of design excellence through intelligent and innovative design solutions.

His special area of interest is innovation in all fields of design, in parallel with sustainable design and life cycle efficiencies.

Simon is responsible for all direct communication and interface with the Client, Consultants and Contractors. Projects include:

- Jane Street Balmain Residence
- McAuley Hawach Lawyers Office Fitout
- NRMA Refurbishment
- Subaru Network Development 2020
- Boral North Ryde NSW Head Office Fitout
- AWE Limited Head Offices, North Sydney and Perth.
- Australian Bureau of Statistics: NSW Regional office.
- NRMA Motoring Services New Head Offices Sydney.
- Colliers International, Head Offices Sydney.
- Oakhill College, PAC, Liesse and Library buildings.
- Sydney City Council Fitout, Town Hall house.
- Royal Flying Doctor Service, City Fitout and Broken Hill visitor centre.
- BridgeClimb, Sydney.
- Tricom Head Offices, Governor Phillip Tower, Sydney.
- Telstra Stadium Corporate Box Fitouts.
- TARBS Broadcast Centre and Head Offices, 6,000 m² Office Fitout and Corporate Identity.
- Qantas New Domestic Terminal, Mascot.
- Verizon, Network Communications and Broadcast Centre in Pyrmont and St Leonards.
- NSW Sports Club, Sydney. Heritage Refurbishment and Fitout.



Santo Talarico

Associate

Santo has been a member of the StudioCCP team since its inception in 1998, and worked with Simon prior to that date at Hassell Pty Ltd.

Santo has lead many complex design and documentation projects, being responsible for knowledge management, coordination and production of contract documentation and IT. His wealth of documentation experience assists in informing and mentoring other members of the documentation team.

Santo is also responsible for the running of the network, CAD standards, communications with consultants and clients, and for the production of graphical material. He has recently been involved in the following prestigious projects, including the Subaru Australia All 4 The Driver Dealership upgrade, AWE Limited's corporate fitout, and Railcorp.

Full architectural documentation includes the following projects:

- PAC Oakhill College.
- Liesse building Oakhill College.
- Library upgrade Oakhill College.
- Darlinghurst Public School.
- Annandale North Public School.
- Rozelle Public School for BER.
- Australian Bureau of Statistics: NSW Regional Office.
- Railcorp, Thirlmere Visitor Centre.
- Sydney City Council Fitout, Town Hall house.
- Royal Flying Doctor Service, City Fitout and Broken Hill visitor centre.
- Subaru All 4 The Driver C.I Rollout 2010.
- AWE Limited, Head Office, North Sydney.
- BridgeClimb, Sydney.
- Taronga Zoo Chimpanzee enclosure.
- Toyota Hurstville.
- Pacific National Fitout.
- NRMA Motoring Services. Head Office, Sydney.
- Subaru Interactive at Docklands.
- NRMA call centre, North Strathfield and Gosford.
- Qantas Domestic Terminal.



George Wong

Associate Architect

George joined the StudioCCP team in 2013, and has had a 20 year professional relationship with Simon Child.

George was previously an Associate with leading Architectural firm HASSELL, and lead the Aviation and Defence sectors. George was responsible for the port-folios of a number of blue ribbon clients including, NIDA, RTA, Qantas, and Sydney Airports.

George has considerable expertise in a variety of project types, including education, performing arts, technical workshops, work place design and project management. George has significant expertise in providing innovative solutions within complex and operational environments, along with highly refined management and design ability. George possesses exemplary communication and presentation skills, and has the ability to effectively process a clients brief and produce a best value outcome.

The realisation of a clients functional and aspirational needs is George's passion, and he strives to deliver projects too the highest quality, on-budget and on-time. George has specific experience in designing complex projects within operational environments where staging and safety is paramount.

George has lead numerous multidisciplinary teams on Architectural projects, and has been a driving force in numerous award winning buildings. A brief selection of George's experience includes:

- Oakhill College Performing Arts Centre
- RTA Crash labs and workshops.
- NIDA School of performing arts.
- Hobart Convention centre.
- University of Sydney lecture theatre redevelopment.
- Broadmeadows Valley Primary School.
- Blue Mountains cultural centre.
- Christchurch International Airport.
- Qantas and Sydney Airports.



Derek Raithby

Architect

Derek has undertaken a significant body of work throughout Sydney and NSW. Derek's experience lies in commercial, hospitality, retail and institutional sectors.

Derek studied Architecture at University of Sydney, graduating with a bachelor of Science (Architecture) and Bachelor of Architecture in 2003.

Derek's skills lie in conceptual, architectural and detailed design. Derek has a comprehensive understanding of the building process .

His project management experience and ability to manage design teams make him an invaluable member of any project.

Derek's interests and passions lie in designing buildings that are not only functional but are sustainably sensitive and responsive to their surrounding environment. Derek is a Green Star accredited professional.

Full architectural documentation includes the following projects:

- Wahroonga Preparatory School.
- Australian Club.
- Australian Bureau of Statistics: NSW Regional Office .
- Solagracia Commercial Office.
- Issa Commercial Office.
- Gordon Golf Club.
- NRMA Strathfield.
- Lorna Hodgkinson Sunshine Home Commercial Office.
- Wang and Yeah Medical Centre.
- Warrawee Bowling Club.
- CO.AS.IT Bilingual School.
- Orana Discount Golf Pty Ltd Driving Range.
- Mcdonalds Belconnen, Bathurst, Forbes, Charnwood.
- Port Bar.
- Queenscliff Surf Life Saving Club.



Sinead byrne

Senior Interior Designer

Sinead completed her Interior Design degree in 2009 at the University of Technology, Sydney finishing with First Class Honours.

Since joining StudioCCP in 2010, Sinead has played a key role in the design and documentation of a number of commercial, educational and residential projects. In addition to this, Sinead has worked on exciting environmental branding and wayfinding design projects.

Sinead has developed an eye for detail and ability to design unique spaces that are a direct response and interpretation of the user's needs and behavioural patterns whilst maintaining a sensitive relationship with the built and natural environment. The resourceful nature of her design approach challenges the way we think and interact within an interior space.

Sinead is able to successfully combine the values and philosophies of an organization with her own design ideals. In the years since joining the team, Sinead has become a valuable member of StudioCCP.

Projects in which Sinead has worked on include:

- AWE Limited - Perth.
- Australian Bureau of Statistics: NSW Regional Office.
- NRMA Head office, Sydney.
- Waterco, Corporate Headquarters.
- Library upgrade Oakhill College.
- PAC Oakhill College.
- Australian Technology Park.
- NRMA Strathfield.
- Crunch Gym Rollout.
- Hard Candy Gym.
- UFC Gym.
- Sydney Harbour Foreshore Authority.
- Railcorp, Thirlmere Visitor Centre.
- 828 Pacific Hwy, Foyer Upgrade.
- Subaru All 4 The Driver Rollout programe.
- Subaru Regional Office, Queensland.
- Johnston St Residences.
- Building Refurbishment Parramatta.



Mira Wangsa

Senior Interior Designer

Mira is a graduate of Interior Design from the University of Technology, Sydney - graduating with Second Class Honours.

Since graduating she has worked on several prestigious projects including Royal Flying Doctors Head offices, AWE Limited Head Office refurbishment, and the heritage Waterview Wharf Workshops in Balmain.

Mira's ability to conceptualise ideas and effectively translate them directly into 3 Dimensional graphic representation is outstanding, and complements her passions for the resolution of the smallest detail in any project.

Within StudioCCP, Mira is developing her interest in sustainable design, from base building design through to product and furniture selection.

Projects in which Mira has worked on include:

- Australian Bureau of Statistics: NSW Regional Office.
- Royal Flying Doctors Head offices.
- NRMA Strathfield and NRMA Wynyard.
- AWE Limited Office fitout, North Sydney and Jakarta.
- Sydney harbour Foreshore Authority, The Rocks Development.
- Subaru Australia All 4 The Driver rollout program 2015.
- Crunch Gym Rollout.
- Hard Candy Gym.
- Taronga Zoo Chimpanzee enclosure.
- Red Bull Fitout Documentation and Design.
- Amity Group refurbishment.
- Beresford Residential 3ds.
- Honda Sutherland documentation and 3ds.
- Kia Sutherland 3ds.
- Oak Road Tynan 3ds.
- Johnston Street Residential 3ds.
- Waterview Wharf Workshop 3ds.



Michael Charles Bryson

Architect

Graduating in 2008 with a Masters of Architecture from the University of South Australia, Michael has amassed a diverse range of experience in the architecture industry.

Beginning his Architectural career with the state government in South Australia, Michael worked as a Graduate Architect for Housing SA as they executed the federal governments Nation building program. Michael was exposed to many once in a generation Housing SA projects. Michael worked at Housing SA for 2 years.

Michael then moved to Aurecon, a global engineering, management and specialist technical services consultancy, Michael was at the forefront of the Building Information Modelling (BIM) revolution, he was trained by industry leading experts and had the opportunity to gain experience on many different large scale projects including; sporting stadiums, medical research facilities and large scale residential projects. Michael moved from Aurecon's Adelaide office to its Sydney office to join its industry leading BIM structural group.

Since joining StudioCCP in mid 2014, Michael has demonstrated a passion for converting project constraints into opportunities and demanding that resolution be considered and elegant. He has had the opportunity to work on a wide variety of projects including commercial, educational, residential and industrial.

His diverse employment history since graduation combined with his enthusiasm for the task at hand has resulted in Michael becoming a valued team member at StudioCCP.

List of projects Michael has worked on at StudioCCP:

- Oakhill College Performing Art centre.
- Oakhill College Harvey building.
- Beach st Coogee residential project.
- Darling st mixed-use development.
- Waterco Office and warehouse redevelopment.

List of projects Michael has worked on previously:

- Adelaide Oval.
- South Australian Health & Medical research institute.
- Brighton mixed-use development.
- Barangaroo.
- James Nash House.
- Large Defence project.
- Lochiel park residential development.
- UNO apartments on Wakefield St.



Marta Mibelli

Architect

Marta graduated with a Master of Architecture from Alghero University in Italy in 2013. During her studies, Marta attended Erasmus at Dublin Institute of Technology for a semester in 2011.

Since graduating, Marta has equipped herself with a unique skill set having travelled and worked in Spain and Italy. She relocated to Sydney in 2014 and joined the StudioCCP team.

Marta's passion for architecture and design includes:

- Sustainability in design;
- Conceptualising complex and unique Client Briefs;
- Presentation of ideas in 3D model scape;
- Resolution of complex design challenges;
- Planning to compliance of statutory codes and standards.

Projects in which Marta has worked on include:

- Subaru Corporate Identity 2015.
- Oakhill College PAC 3D visualisation and Photoshop.
- Rozelle mixed-use development.
- Crunch gyms in Mentone and Highpoint.
- Waterco Head Office Fitout.
- Telogis Fitout.
- Sektor Office Fitout.



Talitha Mathias

Interior Designer

Talitha has graduated from the University of Technology Sydney with honours in Bachelor of Interior Spatial Design.

Since graduating Talitha has gained valuable experience from working in a branding and design company where she learnt and assisted across a wide range of projects within Australia and overseas.

As part of StudioCCP Talitha aspires to contribute her passion and creativity into current interior/architecture projects. She finds excitement through the range of projects StudioCCP does, as she aspires to expand her knowledge in design across a variety of spatial dwellings. Talitha values process in each project, to comprehend a holistic scope, to generate clever, innovative ideas.

List of projects Talitha has worked on at StudioCCP:

- Jane Street Balmain Residence
- McAuley Hawach Lawyers Office Fitout
- NRMA Refurbishment
- Subaru Network Development 2020
- Boral North Ryde NSW Head Office Fitout
- Active Age Carinbah Wellness Centre
- APRA Brisbane, Canberra & Adelaide Office Fitout
- CRUNCH Fitness in Sydney and Victoria Fitout
- MG Brand Book and Concept Design

StudioCCP References + Testimonials

StudioCCP will be pleased for you to contact referees independently, client testimonials and site visits of our completed projects can be arranged as required.

Craig Anderson
Group Facilities Manager
NRMA Motoring and Services
Tel: 02 8741 6123

Chris Cassar
Network Development Manager
Subaru
Tel: 02 9828 9328

Adam Heath
Head of PPF - Property Procurement Facilities
APRA - Australian Prudential Regulation Authority
Tel: 0419 209 255

Suellen Brown-Riggs
Project Director
APP
Tel: 0413 693 713

John Boys
P3 Partners
Tel: 02 9817 2545

Phil Sweeney
Property Manager
PSAS
Tel: 0418 222 512

Peter Inkpen
Project Manager
Buildline Constructions Group
Tel: 0431 227 745

Michael Pender
Hewitt Pender & Associates
Tel: 02 9251 7044



"Centennial Plaza"
260- 300 Elizabeth Street
Sydney, NSW 2000

61 2 9281 8600 Tel
www.cbre.com.au

18 December 2015

TO WHOM IT MAY CONCERN

RE: CCP Corp ("CCP")

Our Company, CBRE Pty Ltd, has had many dealings with "CCP" over the past ten (10) years.

"CCP" were our preferred architects on a number of projects across a large range of Commercial buildings in Sydney. Some of these major projects included

- Design and documentation on new bathrooms and end of trip facilities
- Design and documentation on full lobby refurbishments
- Design on full tenancy floor refurbishments / make goods / fitouts
- Security Office refurbishment design and documentation

Throughout this entire period we have always found "CCP" to provide us with 100% support around the clock and we found their creative documentation and service of the highest standard always.

We would highly recommend "CCP" to any client or business considering engaging their services.

Please contact me anytime on (02) 9281 8600 should you need to discuss.

Yours sincerely
CBRE Pty Ltd

Paul McDonald

Paul McDonald
Director – Asset Services



26 November 2010

In 2009 AWE Limited needed to find new office space that would deliver optimal layout configuration in a new and more collaborative working space that would meet the future needs of the business.

As AWE grows, the need for an office environment that better supports the company's culture of sharing knowledge, innovation and commitment to delivery of shareholder value has been most important.

Retaining its headquarters in North Sydney was a given; finding and designing a vibrant and modern office was AWE's challenge.

AWE chose Investa's new 'Ark' building in North Sydney.

Having worked very successfully with CCP previously (CCP designed a 1400m² floor in Governor Phillip Tower in the CBD in 2007), they were an obvious choice.

CCP's ability to get a feel for AWE's culture and to grasp the needs of the business was evident in their ability to understand the design brief.

The brief was to create an open, dynamic and flexible space that was modern but timeless. A design that was not just visually appealing, but easily recognisable as being 'AWE'. In addition, AWE wished to embrace environmental sustainability in its own design so it was imperative that careful consideration be given to ensure the design and also the selection of fabrics, fixtures and furniture were in keeping with set criteria.

The result is that AWE has a bright, modern and unique office environment that is proving to be the envy of many of its visitors, and is a very happy and productive working environment for its employees.

Thank you CCP!

Anne Attard
Corporate Services Manager





ASSET MANAGEMENT DIRECTORATE

27th Aug 2010

To whom it concerns,

Churchill Child Partnership have worked on a range of projects for me over the years.

I have personally found it refreshing to work with a design company who provided quality designs and documentation in a timely manner.

The company principals were involved at key points in projects and had a sense of pride in their work, whilst maintaining & improving their companies reputation at all times.

Their documentation was generally of a high standard with sufficient detailing provided to support their designs.

Where there were co-ordination issues or where designs could be misinterpreted they pro-actively worked with the project manager, sub-consultants, contractor & sub-contractors as required to successfully resolve the issue.

They were able to work within strict budgetary constraints and yet still achieve successful outcomes.

CCP went further than most to clarify the client and project manager's objectives in order to deliver a design in line with the clients vision for the project.

They proved to be very diligent in reading design meeting minutes and adjusting the design to suit. Where they disagreed with direction they argued their case & sought agreement prior to progressing design.

CCP did not seek variations on projects unless there was a major change to their scope.

Most of all I found CCP very easy to deal with and would have no reservation in recommending them for design works.

Eamonn O'Mahony

Project Director

Strategic Projects

Asset Management Directorate

T 9561 1174 F 9561 8505 M 0419 357 526



15th December, 2011

To whom it may concern,

We engaged CCP to undertake the architectural design consultancy for our new Sydney Office fitout of 5500m2 at levels 7 to 10, 44 Market Street.

Simon and Heidi were a pleasure to deal with and produced a fantastic outcome. They took the time to ask what was important to us and to understand what we were trying to achieve in our new premises, translating this into themes which reflected both the nature of our work and our culture.

Their design achieved a great balance of both function and form and provides our staff with a modern, vibrant and refreshing place to work. The feedback from staff and visitors is overwhelmingly positive.

Please do not hesitate to contact me if you would like further information.

Heather Jones

Director | National Property
Australian Bureau of Statistics

Australian Bureau of Statistics

Ph: 02 6252 7787

Mob: 0407 669 103

Email: heather.jones@abs.gov.au

StudioCCP Office Details

Legal Entity:	Australian Registered Company
Business trading name:	CCP Corp Pty Limited (formerly Churchill Child Partnership)
Business Structure:	Privately owned
ABN:	19 149 513 717
ACN:	149 513 717
Locations Registered:	Unit 7/ 37 Nicholson Street, East Balmain NSW 2041
Registered for GST:	YES
Registered Office Address:	Unit 7/ 37 Nicholson Street East Balmain NSW 2041
Postal Address:	Unit 7/ 37 Nicholson Street, East Balmain NSW 2041
Domain Address:	www.ccpcorp.com.au
Date established:	1998
Licence and Permits:	YES
Memberships/ Affiliations:	RAIA, SIAD
Business owner:	Simon Child
Relevant owner experience:	Simon graduated from London University in 1983. 31 years in Associate and Private practice.



StudioCCP Current Projects

The projects listed below are just a few under current construction and development by StudioCCP:

- NRMA Refurbishment - Gosford and Wynyard
- APRA Office Relocation - Brisbane, Canberra and Adelaide
- McAuley Hawach Lawyers Office Fitout - Parramatta
- Subaru Network Development 2020
- New Crunch Fitness Gyms- NSW and VIC
- Waterview Wharf Workshop Townhouses - Balmain East

StudioCCP

THANK YOU



StudioCCP

No. 7 Waterview Wharf Workshop
37 Nicholson Street,
East Balmain NSW 2041

T: 02 9555 4355

Contact: Simon Child

E: simon@ccpcorp.com.au



www.ccpcorp.com.au